

Roofing - Drip-steel profile - Protective plates

For NINZ doors



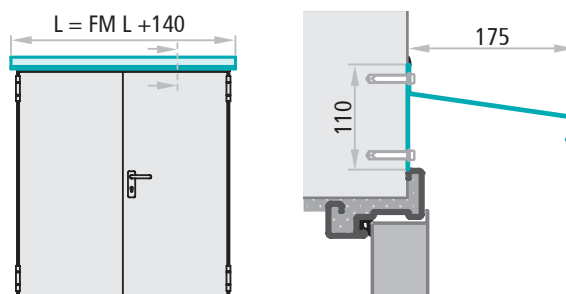
ROOFING

Upon request for Univer and Proget doors, to be ordered together with the door.

Conceived for exterior use of metallic doors, the roofing protects against infiltration of rain from above between the door edge and the rebate of the frame. The small potrusion and RAL painting for exterior use in the same color of the frame complete the design of the door.

To be applied onto the wall, in contact with transom.

Made out of galvanized sheet metal with thickness 10/10 mm, painted with RAL for exterior use (in the frame color), complete with holes for fixing to the wall (screws and plugs excluded). Available for doors with FM L from 500 to 2660 mm (supplied in two elements for FM L > 2360 mm).



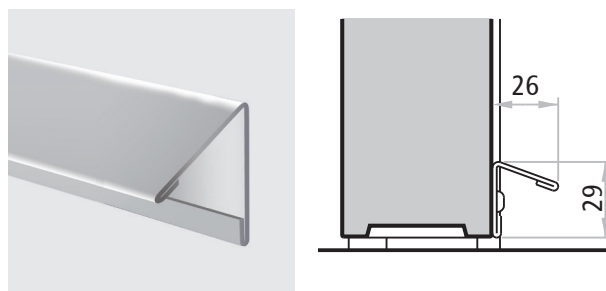
ATTENTION

The roofing performs the function of a barrier against vertical rain limited to the upper part of the door. Therefore the roofing does not protect any eventual window or ventilation louvers on the door, so for these cases provide canopies or awnings for a complete protection of the product.

DRIP-STEEL PROFILE

On request for Univer and Proget one-leaved doors. Normally used to prevent condensation from dripping down the door leaf and puddling beneath the door. The profile is made of "Sendzimir" processed galvanized sheet metal painted the color of the door leaf.

It is applied usually on the push side of the leaf on site after being cut to measure, to be attached with the screws provided.



Lengths available	FM L door leaf
828 mm	to 800 mm
928 mm	to 900 mm
1028 mm	to 1000 mm
1378 mm	to 1350 mm

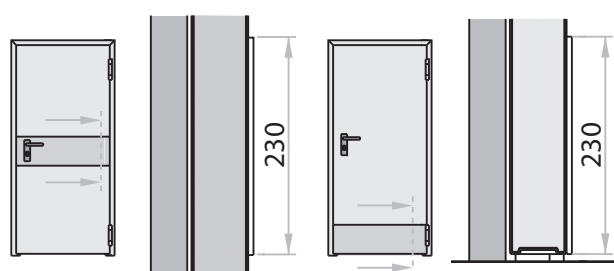
PROTECTIVE PLATES AND KICKPLATES

On request for 1 and 2 leaf Univer and Proget doors, specifying the side of application (pull or push).

Their main function is to protect the parts of the door that are vulnerable to being scraped by carts, hospital beds, etc.

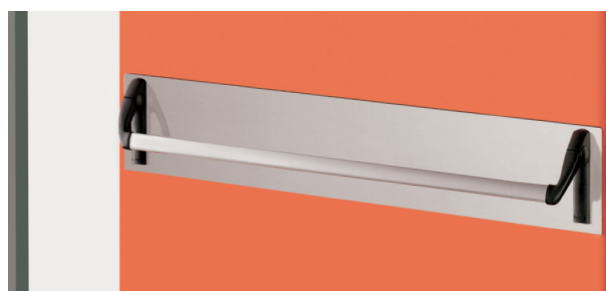
They are made of AISI 304 brushed stainless steel sheet metal with a standard height of 230 mm.

For on-site attachment with two-sided adhesive factory applied on the back, at the bottom of the door (kick plate) or at handle height (protective plate).



Protection plates

Kick plates



Holes are factory prepared for the passage of the handle panel and cylinder



Example of application on the push side